



same same, but different

authority files beyond librarian use

our argument

1. The GLAMorous internet
2. Linked data or the Semantic Web
3. To claim authority
4. Opening the authority file GND
5. Why should you care?

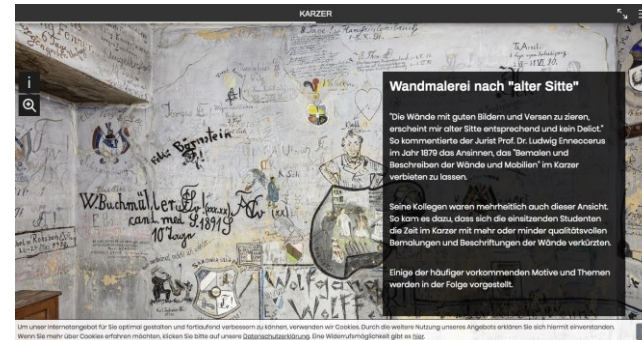
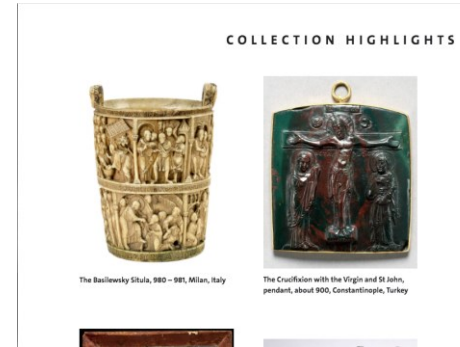
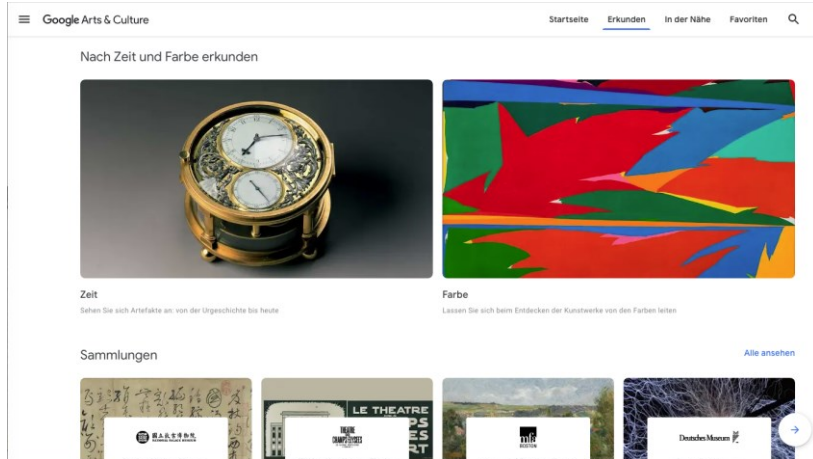




the GLAMorous internet

where we stand

online exhibitions



The GLAMorous internet

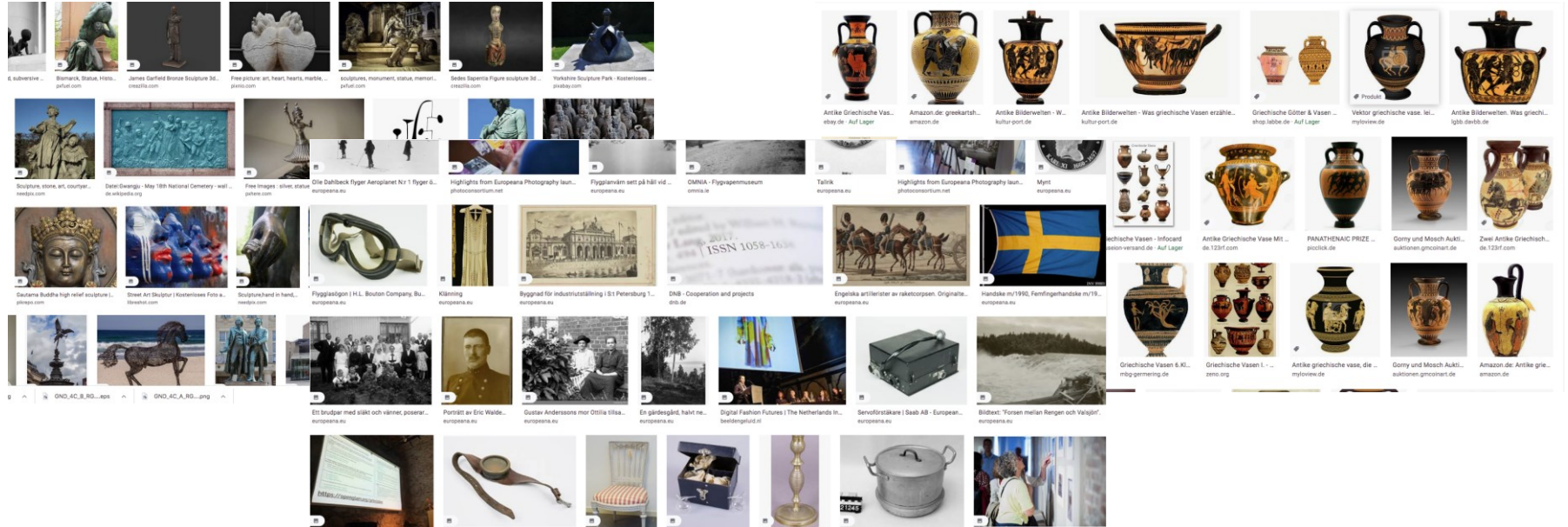
Corona spurred the digital transformation of

- Galleries
- Libraries
- Archives
- Museums

who display increasing numbers of items online to cope with the impact of pandemic restrictions



cultural heritage content online

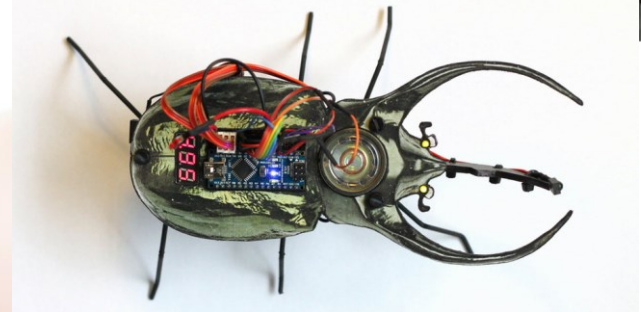


GND4C presentation by Jens Lill (BSZ, Germany) and Barbara Fischer (DNB, Germany) on occasion of the CIDOC-conference 2020

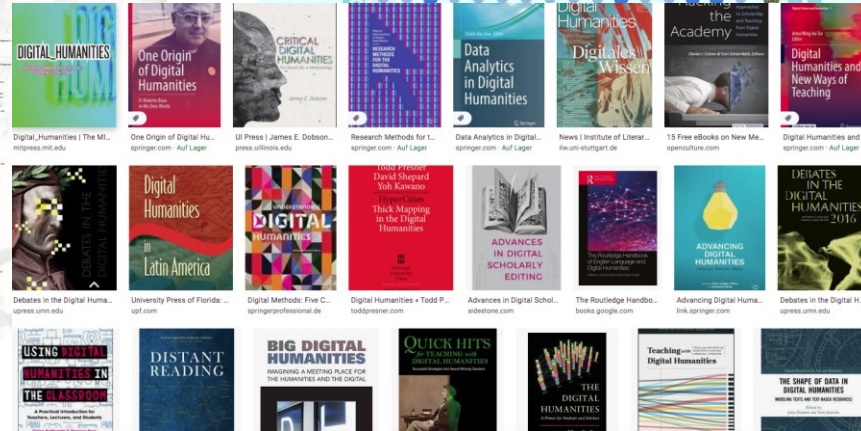
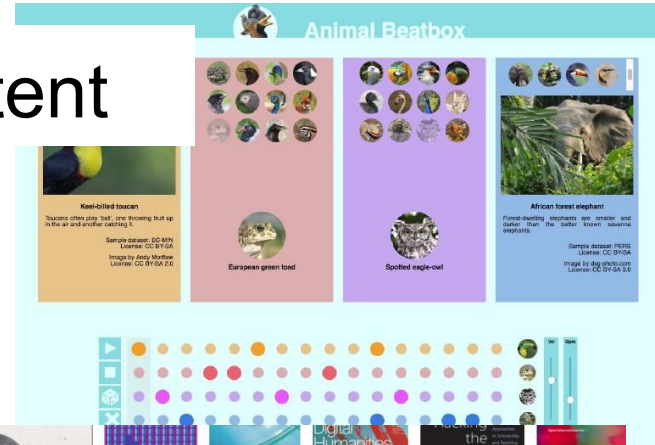
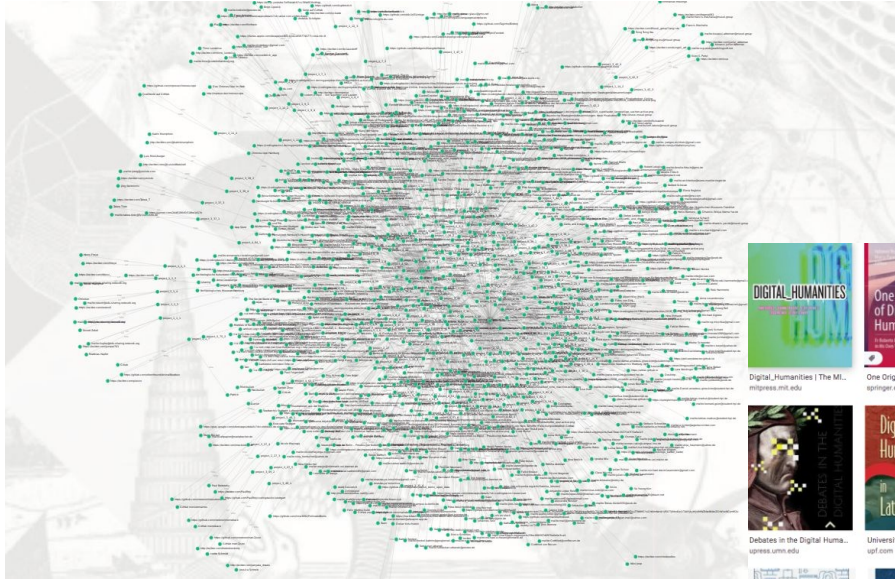
creative reuse of online content



Inspired by: Dress (Mantua) with Train
#etsyfinds, c.1750 - c.1780



creative reuse of online content





Linked data or the Semantic Web



Through the Labyrinth of Data

Tim Berners Lee:



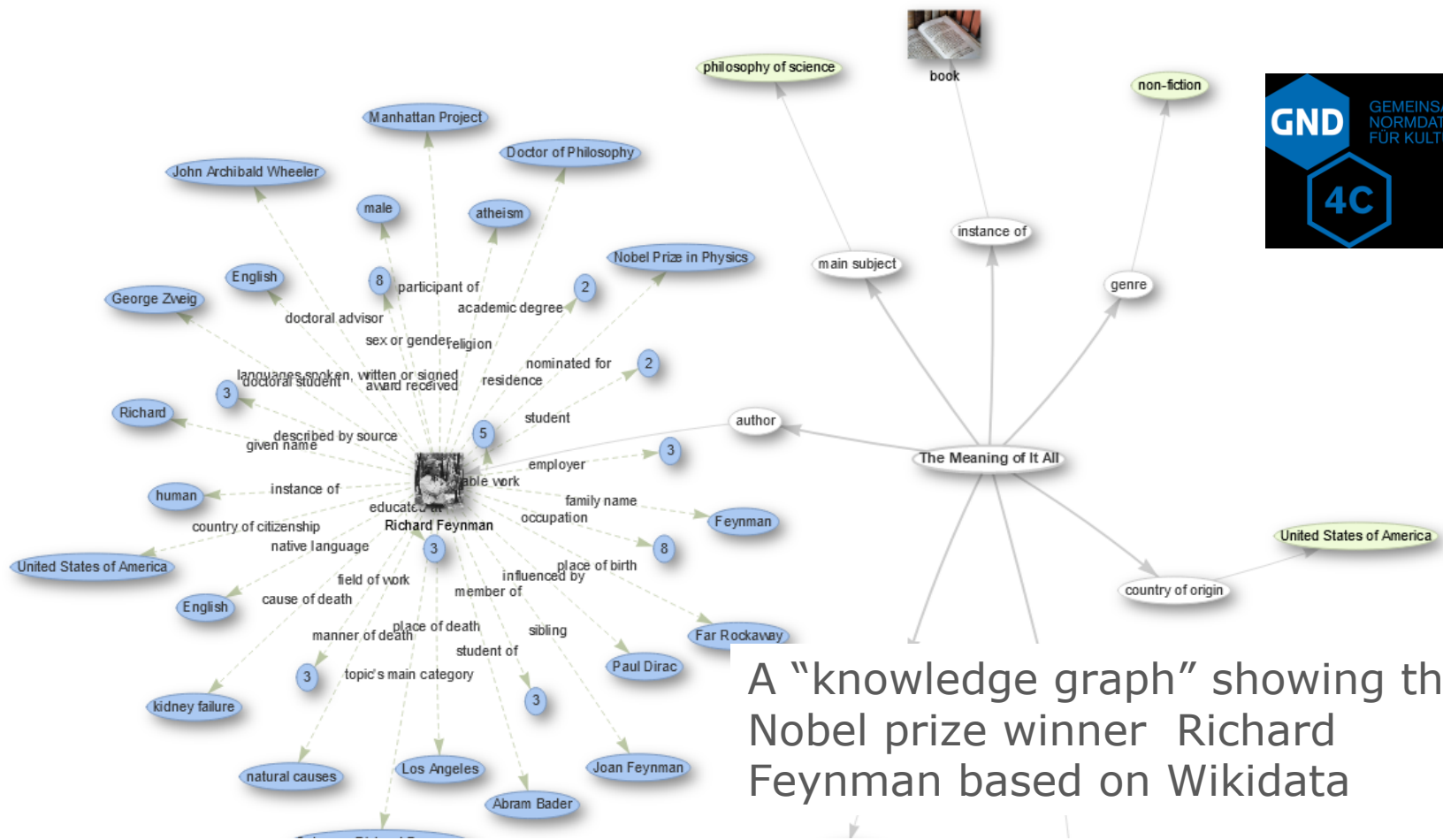
Linked Open Data is the Path

motivation



“The Semantic Web is a new form of Web content that is meaningful to computers will unleash a revolution of new possibilities” 2001





A "knowledge graph" showing the Nobel prize winner Richard Feynman based on Wikidata

GND4C presentation by Jens Lill (BSZ, Germany) and Barbara Fischer (DNB, Germany) on occasion of the CIDOC-conference 2020

GEGENWARTSKUNST – DIE HIGHLIGHTS

Die Kunst der Gegenwart umspannt im Städel die Zeit von 1945 bis heute. Dieser Zeitraum versammelt eine Vielzahl von sehr verschiedenen Kunstströmungen, die sich in immer knapperen Zeitabschnitten zu- oder gegeneinander positionieren. Die Sammlung macht weiträumige Verflechtungen über Jahrzehnte, Schulen, Ismen und Gruppierungen hinweg erkennbar.

30 Werke
Erstellt von
Städel Museum
2.3.2018

PRÄSENTATION STARTEN ↗

```
<!DOCTYPE html>
<html lang="de">
  <head>...</head>
  <body data-messages="" style="" >
    <noscript>...</noscript>
    <script dataLayer = [{}]></script>
    <script>...</script>
    <header class="dsHeader" style="">
      <div class="dsAlbum" data-media="/de/album/view/gegenwartskunst-die-highlights/media">
        <div class="dsAlbumCover">
          <div class="dsAlbumCover_viewer" data-path="/images/4114/pyramid_files/" data-info="{type: 'pyramid', width: 6229, height: 7848, overlap:"
```

html body

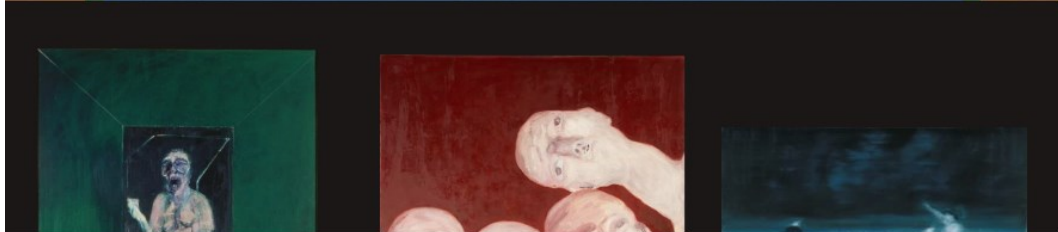
Filter :hov .cls +

```
element.style {
}
body {
  font-family: "Freight Sans",Arial,Helvetica,"MS Trebuchet",sans-serif;
  font-style: normal;
  font-weight: 400;
  color: #EDEAE3;
  background: #2E2A29;
  font-variant-numeric: lining-nums;
  font-feature-settings: "lnum";
  -webkit-font-feature-settings: "lnum";
  text-rendering: optimizeLegibility;
  font-smoothing: antialiased;
  -webkit-font-smoothing: antialiased;
  -moz-osx-font-smoothing: grayscale;
}
html, body {
  height: 100%;
```

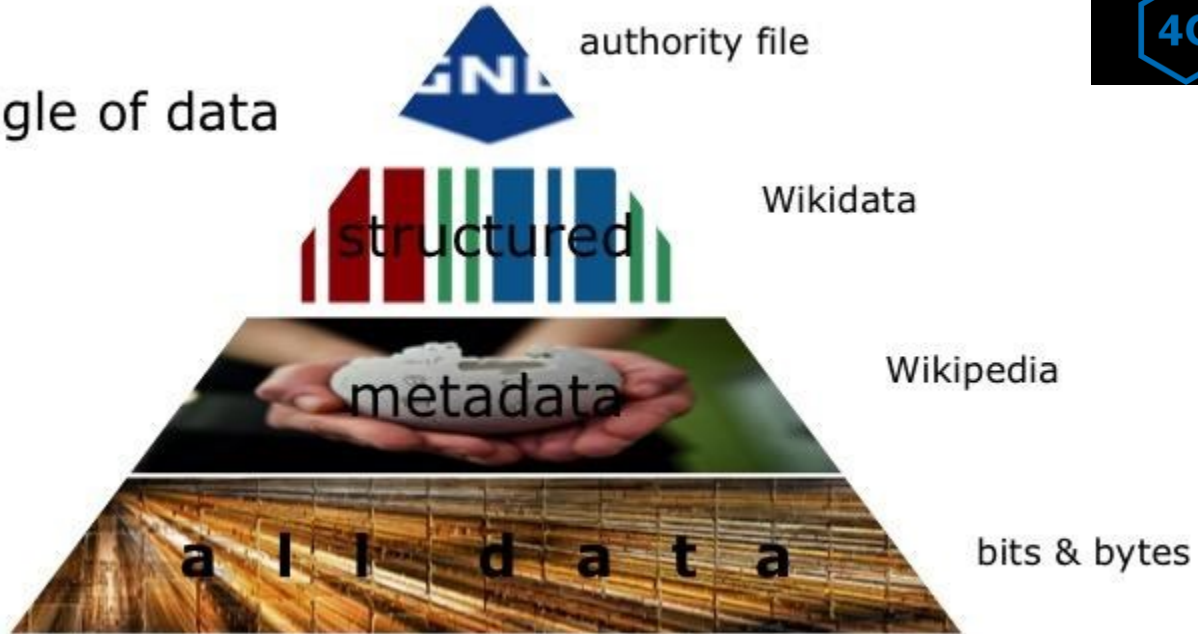
Highlights from the Chrome 85 update

Style editing for CSS-in-JS
Styles created with CSS Object Model APIs and Constructible Stylesheets are now editable.

Lighthouse 6
New metrics that align with Google's Core Web Vitals, a new weighting of the Performance score, and more.



The triangle of data

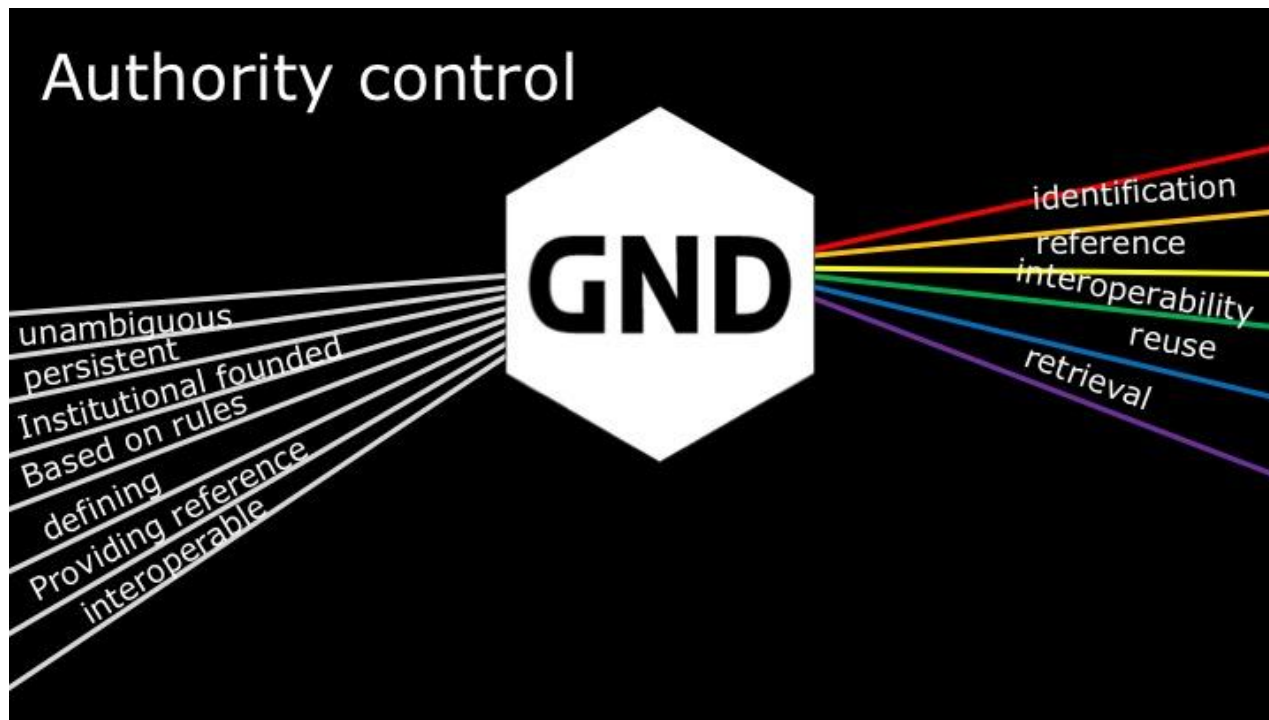




to claim authority

why do we need an integrated approach
across domains, disciplines and sections?

GND spurs the spread of FAIR data



The GND embraces the FAIR data principles.

- findable
- accessible
- interoperable
- re-usable

reliability reliability reliability reliability reliability reliability reliability reliability reliability



BRÜCKEN IM NETZWERK DER KULTUR
UND WISSENSCHAFT

www.dnb.de/gnd

GND

GEMEINSAME NORMEN

BSZ Bibliothekservice-Zentrum
Baden-Württemberg

KULTURDATEN



DEUTSCHE DIGITALE BIBLIOTHEK
Kultur und Wissen online

DEUTSCHE
NATIONAL
BIBLIOTHEK

SH
Schleswig-Holsteinische
Landesbibliothek

Open the

ID

digicult

Gefördert durch
DFG Deutsche
Forschungsgemeinschaft



LANDESARCHIV
BADEN-WÜRTTEMBERG



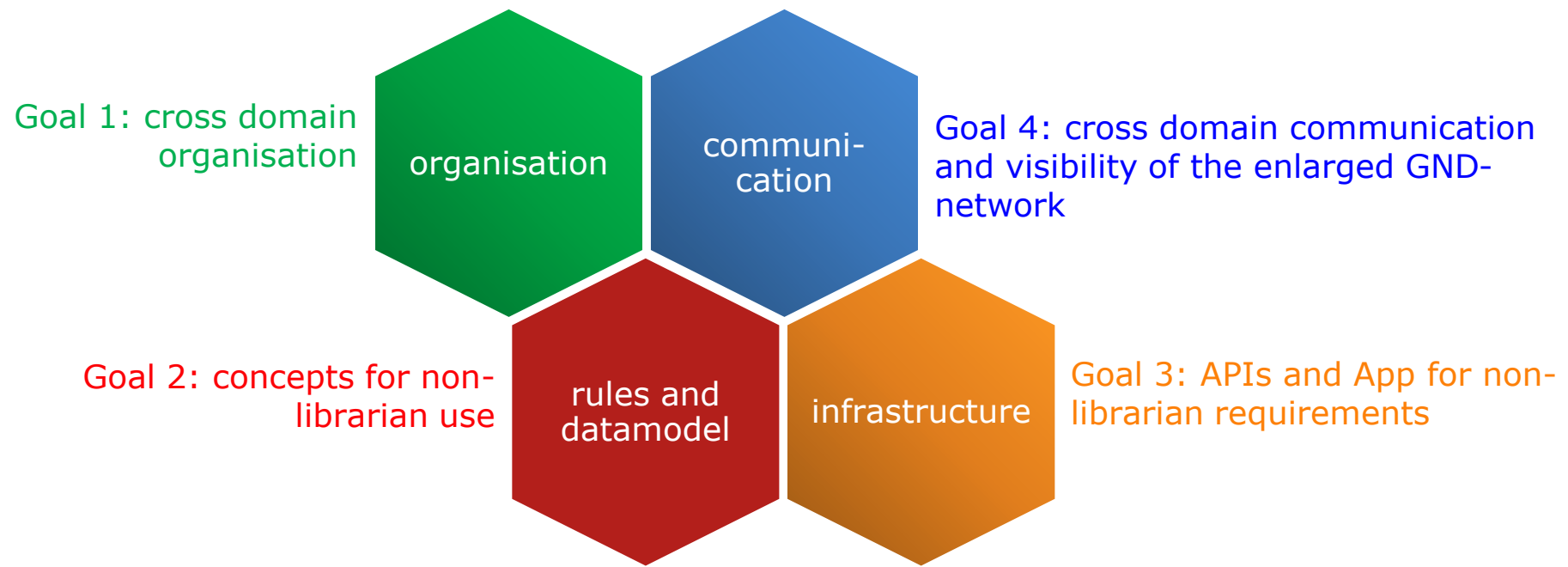
Deutsches
Dokumentationszentrum
für Kunstgeschichte
Bildarchiv
Foto Marburg

4C



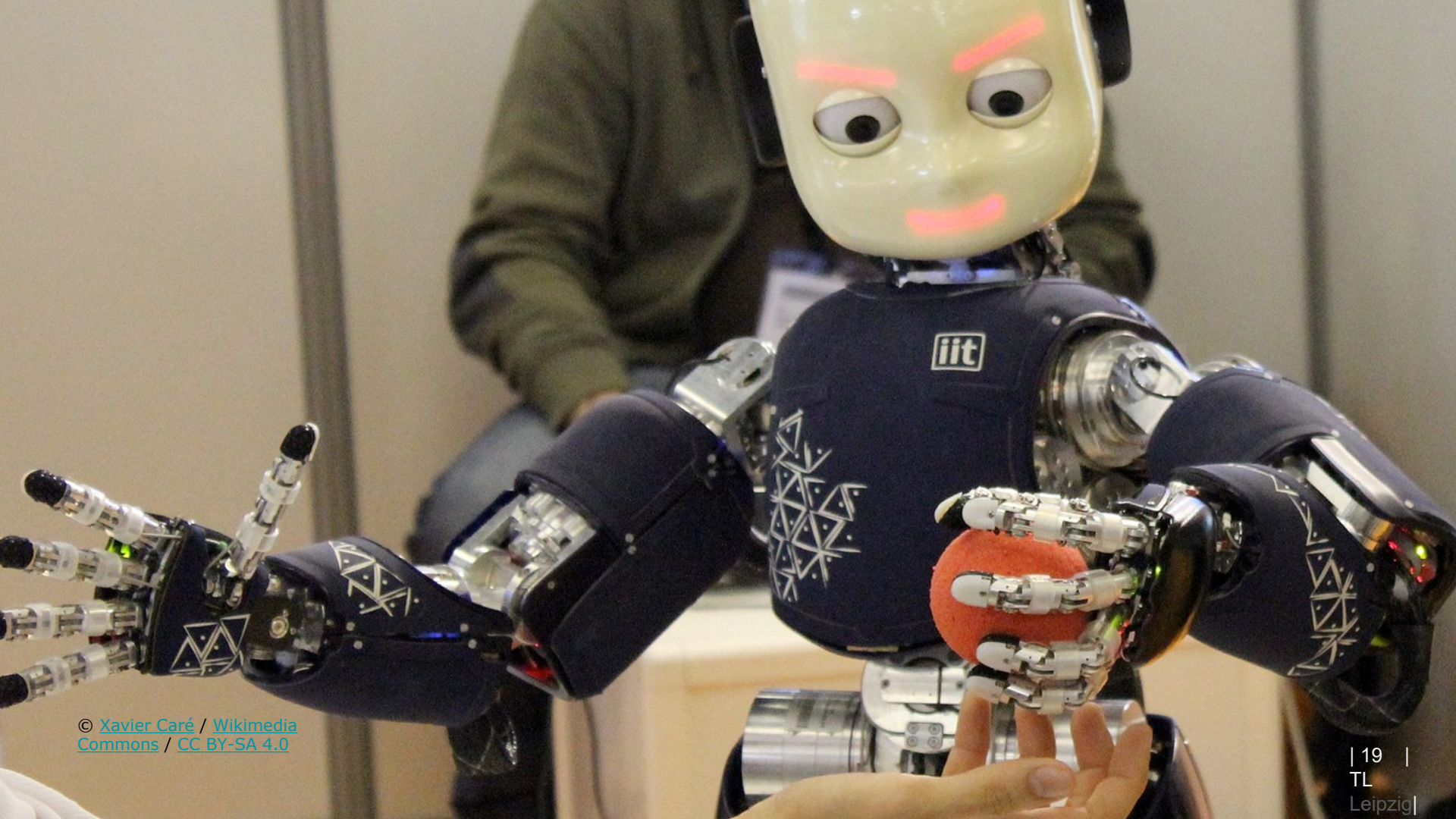


We open the GND for cultural data





why should you care?



© [Xavier Caré / Wikimedia Commons](#) / [CC BY-SA 4.0](#)

please share your comments in the chat

or reach out directly to

Jens Lill at BSZ, project manager for GND4C, jens.lill@bsz-bw.de

Barbara Fischer at DNB, project lead for GND4C, b.k.fischer@dnb.de

Follow us on Twitter @gndnet

Slides are licensed under [CC-BY-SA](https://creativecommons.org/licenses/by-sa/4.0/) for credit on images please see slide for details

merci pour votre intérêt

