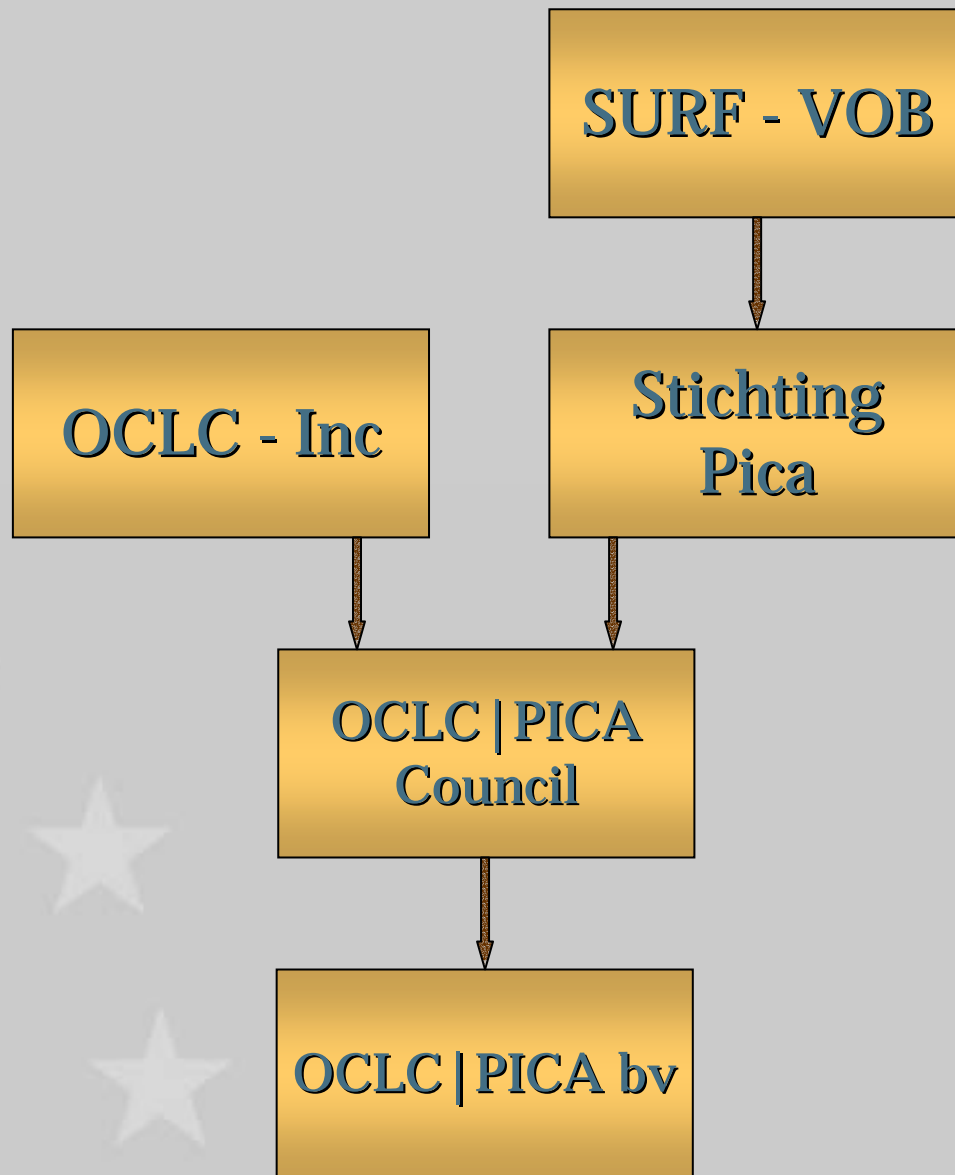


OCLC | PICA

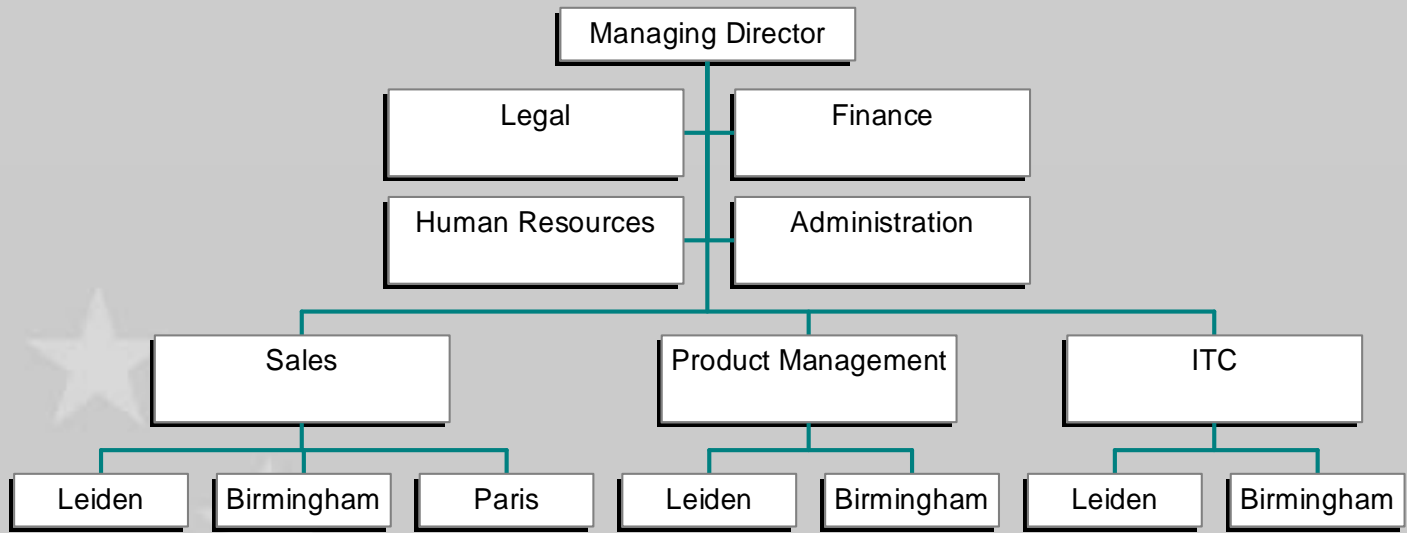
organisation and product overview

11-11-2005

Martin van Muyen



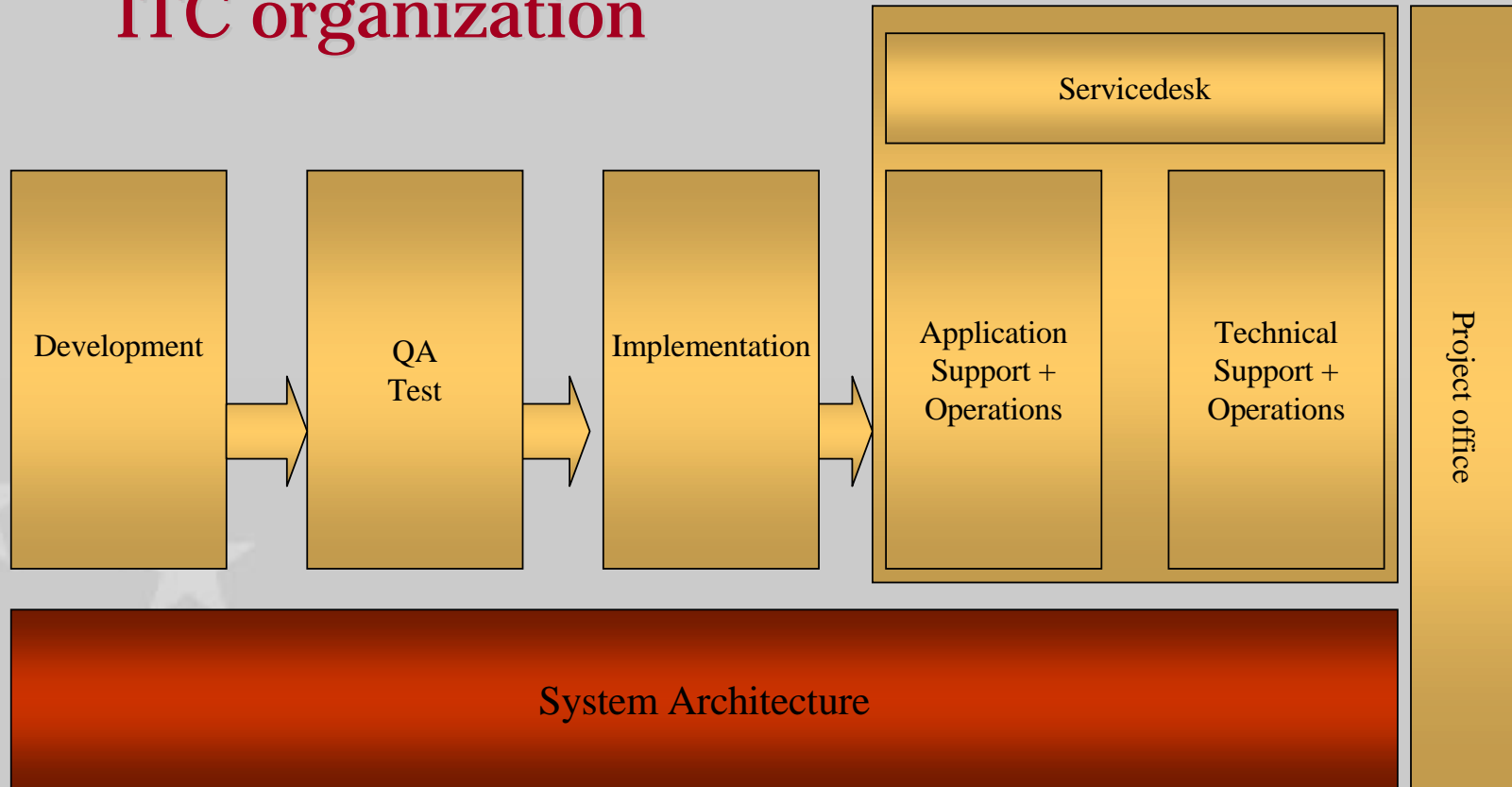
OCLC PICA BV



Leiden : 90
Birmingham : 20
Paris : 3

Sales : 15
PM : 10
ITC : 70

ITC organization

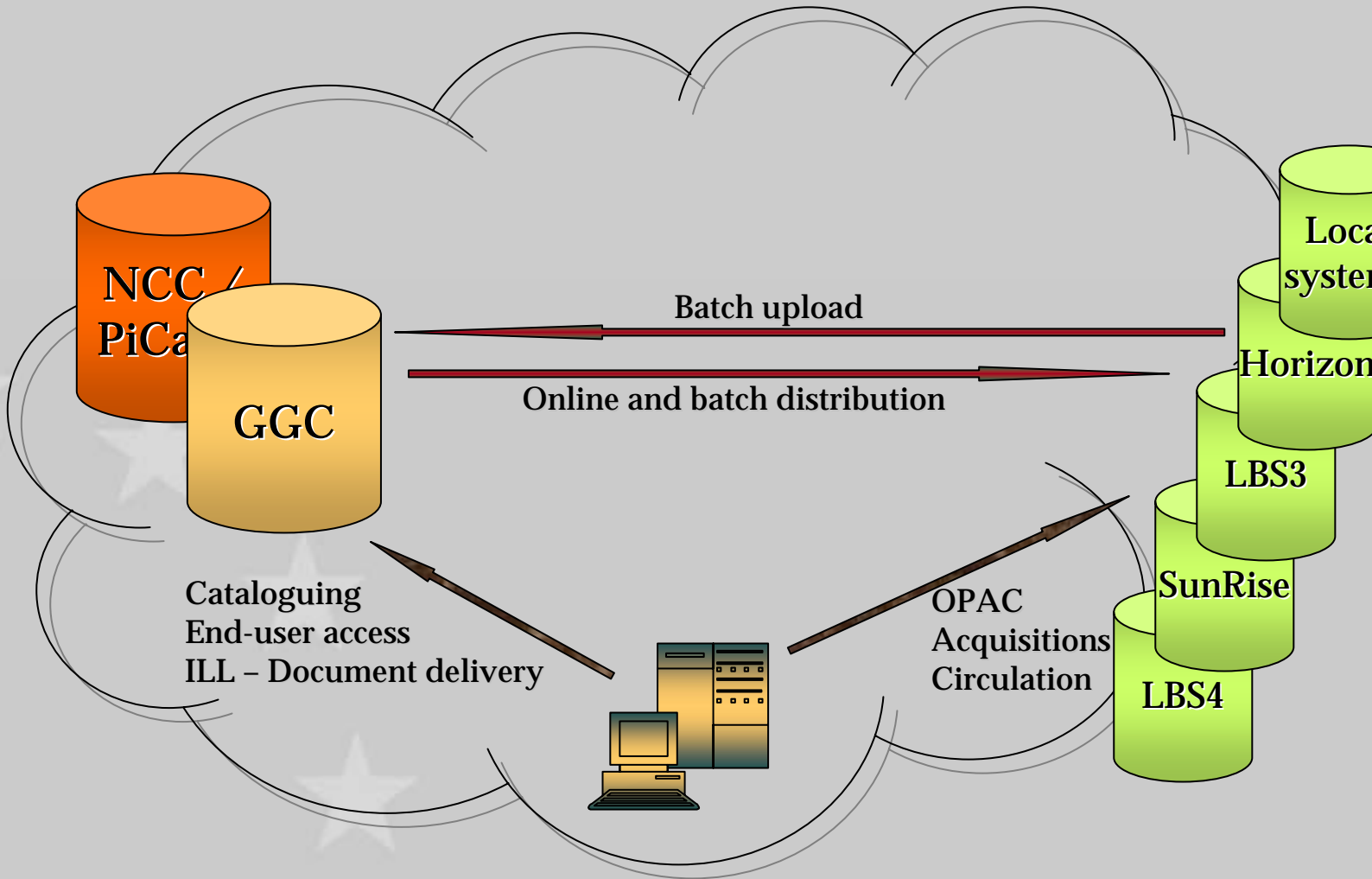


Development	: 20
Operations	: 20
Implementation	: 15
SysArc / QA / Project Off.	: 15

Mission

- Develop software for union catalogues and libraries
- Maintain Dutch national library infrastructure
- Export Pica software on partner basis
- Sell OCLC products in Europe and beyond

Dutch library infrastructure



Pica products

CBS – Central library system

A generic solution for:

- creation and maintenance of union catalogues
- controlled document ordering and delivery

Fourth generation → **CBS4**

LBS – Local library system

A generic solution for:

- local catalogues
- local library processes

Fourth generation → **LBS4**

Pica partners

- **Union Catalogue Managers (Verbundsystembetreiber)**
 - OCLC|PICA runs its own Union Catalogue system
 - New versions are first installed in the Netherlands
 - Distribution after proven reliability
 - Agreement on future developments
- **Independency**
 - Responsible for own CBS system
 - Independent parameterisation
 - Independent database conversions, migrations and batch loads
 - Site specific software enhancements
- **Current and new partners**
 - GBV – Hebis – DDB
 - BSZ – NLA

CBS modules (1)

- **PSI – Pica Search and Index Engine**
 - PSI user interface for end-users
 - WinIBW user interface for librarians
- **CAT – Cataloguing module**
 - Shared cataloguing
 - Local / stand alone cataloguing
 - Free cataloguing format: Pica3, Unimarc, Marc21
- **ILL – Inter-Library Loan module**
 - End-user interface for document order
 - Automatic distribution among providing libraries
 - Flexible tariff structures
 - ISO – ILL compliant

CBS modules (2)

- **IMP – Batch import and Database conversions**
 - Record conversion
 - Duplicate detection
 - Record merging
 - Record linking

- **EXP – Record export**
 - BibServ – Batch export:
 - index and log-file selection
 - FTP transfer
 - Output formats: MAB2, Unimarc, Marc21 etc.
 - Sorted XML - output
 - OUF – Online Update Fetch:
 - Online distribution of cataloguing production
 - Linked record download

CBS modules (3)

- **Tolk – Z39.50 target**
 - Character and record conversion
 - Bath compliant
- **IPort – Z39.50 / SRU / HTML library portal**
 - Simultaneous searching
 - Customized user-interface
 - End-user services: current awareness, bookshelves

CBS in SWB Verbund

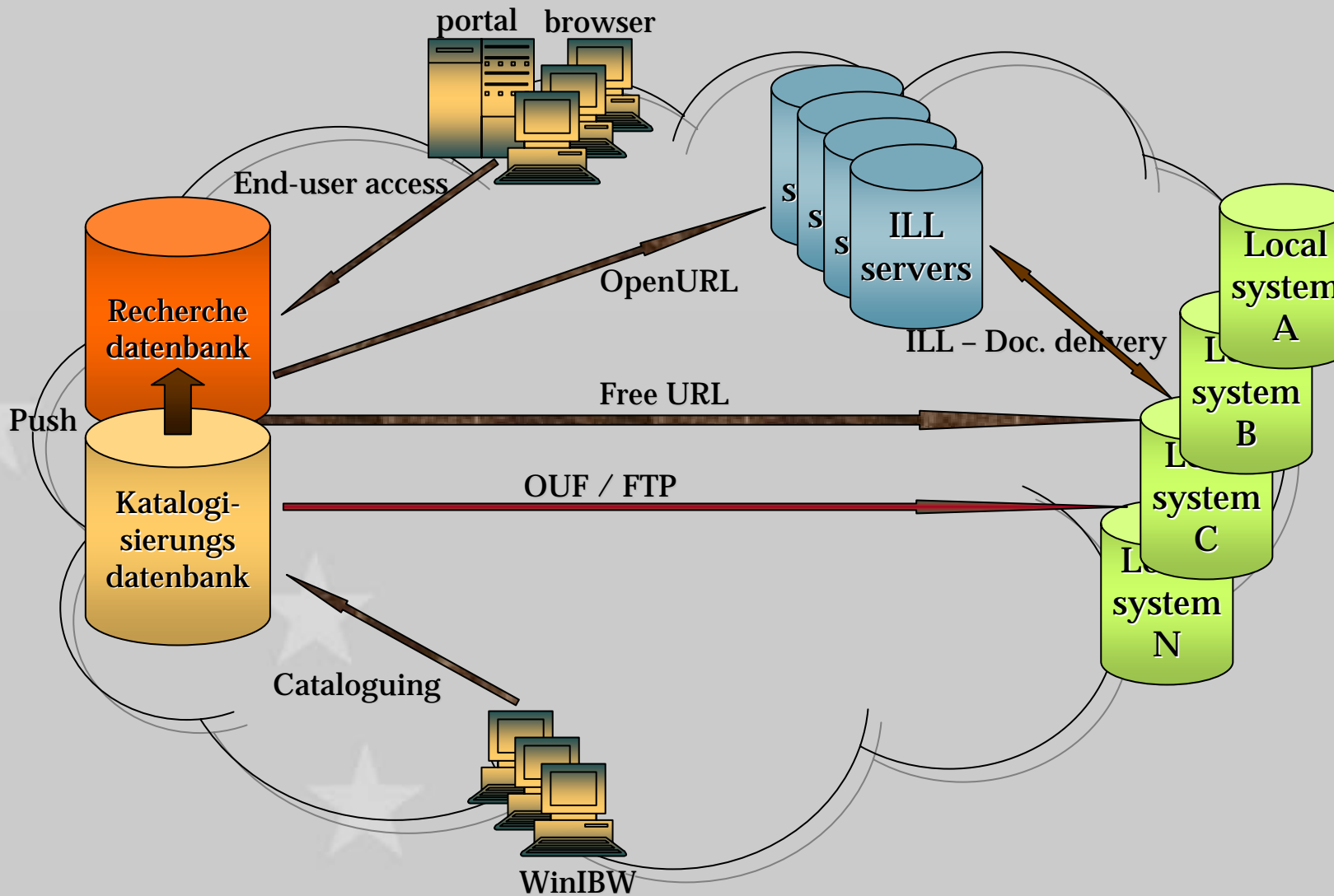
Recherchedatenbank:

- **PSI** : end-user interface
- **Open-URL** : Sisis ILL / Fernleih server
- **Free format URL** : to local OPAC's
- **Tolk** : Z39.50 target

Verbundsdatenbank:

- **PSI** : WinIBW interface
- **CAT** : WinIBW interface
- **EXP** : OUF online distribution
- **IMP** : BibServ FTP download
- **IMP** : Batch import
- **IMP** : De-duplication
- **IMP** : Record linking

CBS in SWB Verbund – picture



CBS plans and activities

- **CBS implementations:**
 - SWB-Verbund
 - NLA: National Library of Australia
- **Unicode implementation:**
 - WinIBW v3.0 based on Mozilla
 - Non-roman cataloguing projects in France (Abes) and Holland
- **BSZ and NLA developments:**
 - >99 copies per library
 - Linked record counters
 - Enhanced OUF – linked records distribution
 - New search screen in WinIBW
 - Web-based holdings cataloguing (Exemplarkatalogisierung)
 - LDAP-based links to customer database
- **Future developments:**
 - Facilities for meta-data cataloguing
 - Script converters for transliterations
 - OAI-harvesting

LBS modules

- OPAC : PSI - link with CIRC
- Library portal : lport - Z39.50 origin, SRU, XML, HTML
- Cataloguing : CAT - with WinIBW
- Acquisitions : ACQ - includes serials admin
- Circulation : CIRC - includes closed stacks admin
- Reporting : Business Objects - lists, statistics,
management info
- Z39.50 target : TOLK
- Batch export : BibServ

LBS4 – Main characteristics

- **Modular**
 - OPAC (PSI) with open interfaces: SRU, XML, Z39.50 ; access by 3rd party tools
 - Stand-alone OPAC
 - OPAC in combination with ACQ and / or CIRC
- **Browser interface**
 - Easy distribution
 - State-of-the-art templates
- **Flexible**
 - One source code for all sites
 - Parameterisable business rules
 - Multi-level library structures

LBS4 – Plans and activities

- **LBS3 – LBS4 migration**
 - LBS3 migration to SUN
 - Simultaneous LBS3 and LBS4: migration per user
 - 5 migrated systems
 - 3 new systems

- **LBS4 developments**
 - Exchange / Tausch for SPK
 - Bind for SPK, GBV and Hebis
 - Full EDI compliant
 - Stand-alone installation
 - Linking with non-Pica Verbund systems
 - French market

- **LBS4 strategy**
 - Key product
 - Enlarged development capacity
 - Major investments
 - Shorter time to market